

COMPACT
disc

Panasonic®

STARBLADE®

Licensed by **namco®**

3DO, the 3DO logos and Interactive Multiplayer are trademarks of The 3DO Company.
© 1991 1994 NAMCO LTD., ALL RIGHTS RESERVED.
Manufactured and distributed by Matsushita Electric Corporation of America.



FZ-SM5351

Printed in U.S.A.

Panasonic®

STARBLADE®



For use with 3DO™ systems

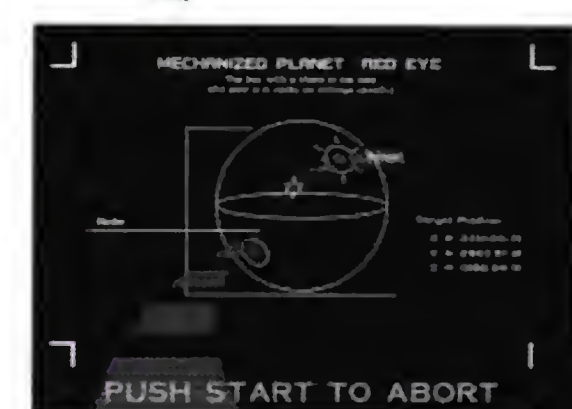
Licensed by
namco®
FZ-SM5351

MEDICAL PRECAUTIONS:

1. Physical activities involving regular repeated movements of the wrists, hands and/or fingers may possibly cause repetitive stress injury. Such injury may also affect muscles in the arms, wrists, hands, fingers, shoulders and neck, chest and abdomen, and the legs and back.
2. There have been reports that some people may experience epileptic symptoms or even seizures while concentrating on flashing lights. It is possible that persons with no previous epileptic experiences may, nevertheless, have an undetected condition. To avoid a possible medical problem, if you have an epileptic condition, consult your physician before playing video games or any other visually intensive software products.

To avoid either of these situations, and as sound practice, if you should use this equipment for an extended period of time, it is suggested that you take periodic breaks of 10-15 minutes each hour. Unit should be used in a brightly lit room. Operating in a close distance to the TV should be avoided.

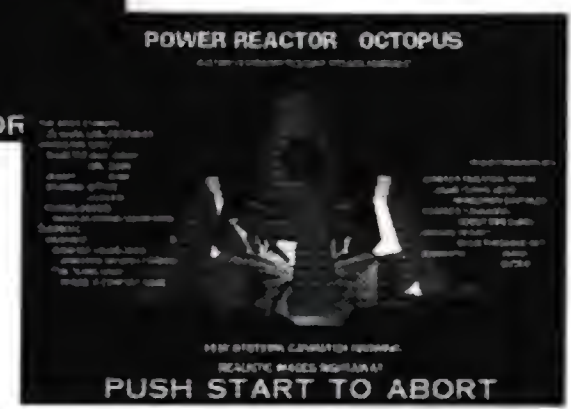
In any event, stop using the Interactive Multiplayer and consult your physician if you detect involuntary muscle movements (such as twitching), altered vision, mental or visual confusion, convulsions, muscular pain, numbness of fingers, palms or other areas.



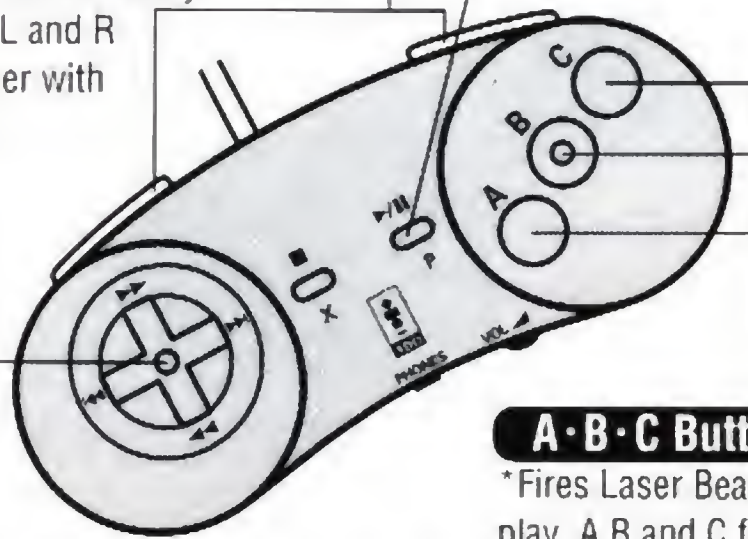
"Geo Sword, this is Viper.
Target Red Eye is covered
by a force field.
There are holes in the
barrier which might be the
entrances to the isles inside.
Our only chance is to get through the holes.
Set your navigation computer to Wxxx, avoid enemy
radar.
Get into the corridor at point NWxxx.
It leads to the power plant 'Octopus' which we've gotta toast.
Do you copy me? Move it! Good luck, Out"

Welcome to join 'Geo Sword' the best squadron in space. Now you are a part of Operation Star Blade. Enjoy the flight with the ultimate space shooting game with super Texture Mapped 3D graphics.

Notice:
Thank you for purchasing Star Blade from Namco. Please read this manual carefully before you start the game and follow the instructions. Keep this manual with your game for future references.



MANUEVER CONTROLS



L · R Buttons
(Targeting Sight Accelerator)
* Accelerates Targeting Sight movement by pressing L or R buttons together with direction pad. More acceleration is available by pressing both L and R buttons together with direction pad.

P Button (Pause/Restart)
* Pause/Restart the game during play.
* Skip animation.

A · B · C Buttons (Triggers)
* Fires Laser Beam Cannon during play. A, B and C functions same.
* Choose from the selection menu.
* Accelerates count down at the end of the game.
Note: A button used in the rest of this manual refers to A, B, or C button presses, also referred to as a trigger.

Direction pad (Targeting Sight Control)
* Moves the Targeting Sight of Laser Beam Cannon.
* Move cursor in the selection menu.

X Button Not used in this game.

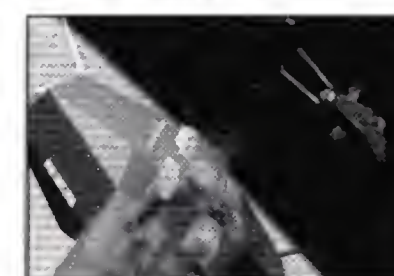
MANUEVER CONTROLS

HOW TO GET STARTED

Turn on your 3DO™ Interactive Multi Player™, power indicator should be on. Open CD tray. Place Star Blade CD-ROM on the center of the tray with printed side up. Close the tray. 3DO Logo mark appears on the TV screen. Wait for Star Blade demo. To open and close the tray, follow the instructions in the manual which comes with your 3DO™ Interactive Multi Player.

GET ON YOUR SHIP

Press P button during demo for start menu. Use Direction pad to choose a mode from [Arcade mode] and [3DO mode]. Press any of A/B/C buttons to start the game.



Arcade mode

Filled polygon just as in the arcade.

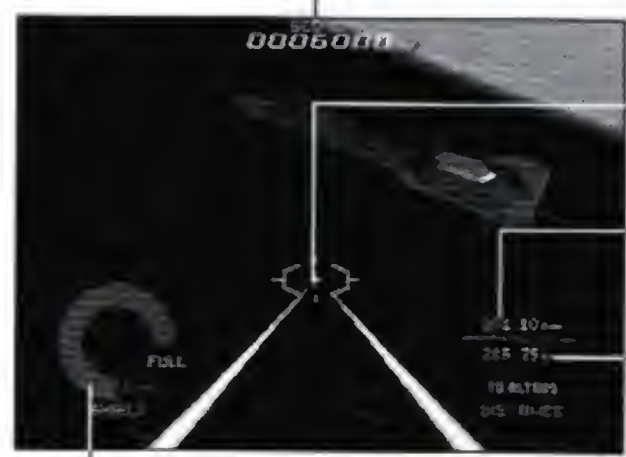


3DO mode

3DO enhanced version with bitmaps to bring new life to the story.

HOW TO GET STARTED

GAME SCREEN



Score

Target Sight

Distance you flew

Distance left to the target

Your Shield Energy left

LASER BEAM CANNON

Catch an enemy at the center of the Target Sight using Direction pad and fire Laser Beam Cannon with a Trigger. Press Accelerator buttons (L/R Buttons) and Direction pad to move Target Sight faster. Press a Trigger to fire Laser Beam Cannon.

Your ship is controlled by the Navigation Computer and you can not change its course.

A hit by enemy weapons decreases your Shield energy. If you have lost all of the Shield energy you are dead and lose the game.

Try to shoot down all the enemies in your view so they can't harm you. Aim and shoot them as quickly as possible, it's the key to survival. Don't forget, a Good enemy is a Dead enemy.



CONTINUE THE GAME

You can continue to play the same game three times. Count down starts when game is over. Press Start button before count down ends. You can accelerate count down by pressing the A button.

HALL OF FAME

You can have your name listed in the Hall of Fame if you are ranked within the top ten pilots. Enter your name in the name entry field using Direction pad and the A button. Choose a letter by Direction pad and enter the letter by the A button. Use [back arrow] mark to erase the last entered letter.

STAGES



Operation Star Blade Federal Space Fleet sent it's 'Geo Sword' squadron to deactivate Empire Fleet's Armored Moving Planet 'Red Eye.' 'Red Eye' belongs to Royal Rapid

Enemy fighters on attack.

Asteroid Belt

Find and destroy Space mines in the field.

Meteor Field

More fighters from their mother ship.

Battleship Zone

Space Plants

Space plants under construction.

Armored Moving Planet of Royal Rapid Deployment Force.

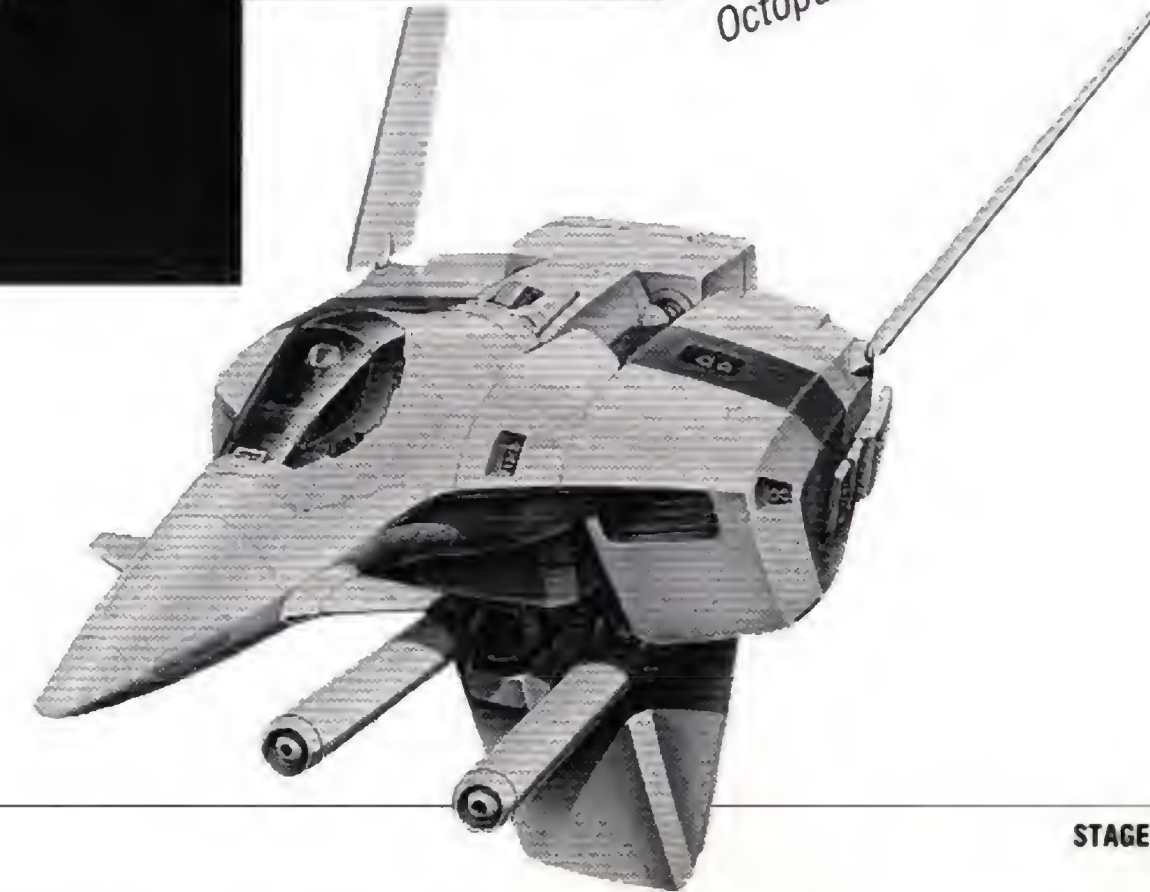
Red Eye/Surface

This tunnel leads to Power reactor 'Octopus.'

Red Eye/Tunnel

Octopus

Destroy Power Stone in Octopus.



STAGES

STAGES

End User Notice

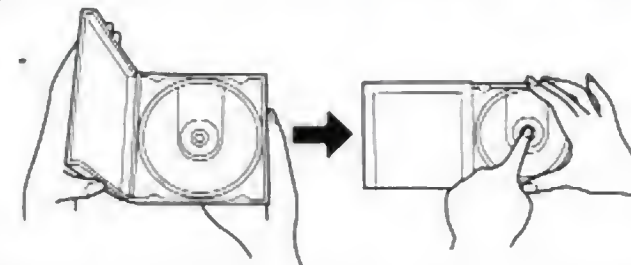
THE 3DO COMPANY SHALL NOT BE LIABLE THE END USER FOR ANY LOSS OF DATA, LOST PROFITS,COST OF SUBSTITUTE GOODS OR OTHER DAMAGES OF ANY KIND OF ARISING OUT OF THE USE OF OR INABILITY TO USE THE SOFTWARE.

THE 3DO COMPANY MAKES NO WARRANTIES,EXPRESS,IMPLIED OR STATUTORY, REGARDING THE SOFTWARE,INCLUDING WITHOUT LIMITATION THE IMPLIED WARRANTIES OF MERCHANTABILITY AND FITNESS FOR ANY PARTICULAR PORPOSE , OR ANY EQUIVALENT WARRANTIES UNDER THE LAWS OF ANY JURISDICTION.

DO NOT USE A FRONT OR REAR PROJECTION TELEVISION WITH PRODUCT. YOUR PROJECTION TELEVISION SCREEN MAY BE PERMANENTLY DAMAGED IF STATIONARY SCENES OR PATTERNS ARE PLAYED ON YOUR PROJECTION TELEVISION. SIMILAR DAMAGE MAY OCCUR IF YOU PLACE THIS PRODUCT ON HOLD OR PAUSE. IF YOU USE YOUR PROJECTION TELEVISION WITH THIS PRODUCT,THE 3DO COMPANY, MATSUSITA ELECTRIC INDUSTRIAL CO.,LTD.,MATHUSITA ELECTRIC CORPORATION OF AMERICA, NAMCO LTD. WILL NOT BE LIABLE FOR ANY RESULTING DAMAGE. THIS SITUATION IS NOT CAUSED BY A DEFECT IN THE PRODUCT OR THE 3DO SYSYTEM; OTHER FIXED OR REPETITIVE IMAGES MAY CAUSE SIMILAR DAMAGE TO A PROJECTION TELEVISION. PLEASE CONTACT YOUR TV MANUFACTURER FOR FURTHER INFORMATION.

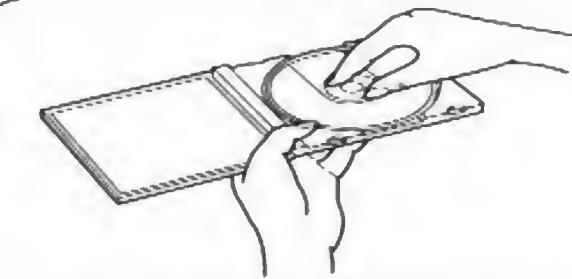
THE EXECUTION OF SOFTWARE WITH THE 3DO SYSYTEM INVOLVES THE USE OF PATENT RIGHTS, GRANTED OR APPLIED FOR, IN CERTAIN COUNTRIES. A PURCHASE OF THE 3DO SYSYTEM IS LICENSED TO USE SUCH PATEMT RIGHTS WITH SOFTWARE LICENSED BY THE 3DO COMPANY. NO LICENSE,IMPLIED OR OTHERWISE, IS GRANTED FOR THE EXECUTION OF OTHER SOFTWARE.

Compact Disc Usage Precautions

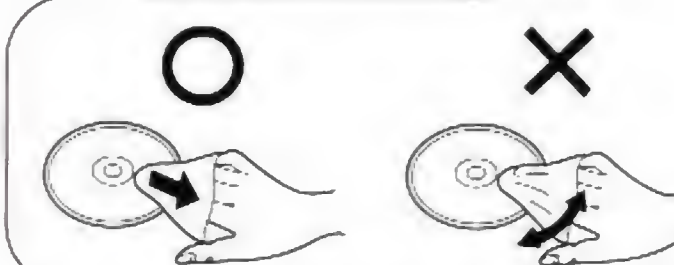


To open the case, gently press both sides of its top.

To remove the CD from the case, press the center holder and lift the CD, holding by the edges.



To return the CD to the case, insert the CD with the label facing upward, and press downward at the center.



If the surface is soiled, wipe gently with a soft, damp cloth (dampened with water only). Always move the cloth directly outward from the center of the CD, not in a circular motion.

DO NOT use record cleaning sprays, benzine, thinner, static electricity prevention liquids or any other solvent.

DO NOT write on the surface of the CD with a ball-point pen or other writing instrument.

Be sure to store CDs in their cases to protect them from dust, scratches, and warping. DO NOT place or store CDs in the following places:

- ❖ Locations exposed to direct sunlight, humid or dusty locations.
- ❖ Locations directly exposed to a heat outlet or heating device.